



ACCESSORIES2011

TELESCOPES ••• SPORT OPTICS

INTRO AND TABLE OF CONTENTS

At Celestron we are committed to dedicating our engineering resources to the research and development of new product innovations; including regularly enhancing our extensive line of product accessories. Each accessory category is carefully and consistently reviewed to provide our customers with the highest quality, state-of-the-art accessories. We listen to customer feedback and frequently add new accessories to our line to meet the growing needs of our customers. In addition, many of our accessories are designed for use with Celestron products as well as with products from other telescope manufacturers. Celestron's stellar reputation for continuous product development, customer service, technical support, innovation, and design excellence guarantees that we provide our customers with a complete product experience that will bring years of enjoyment, reliability and satisfaction.

CONTENTS

SkyScout® Personal Planetarium® Accessories	2
Eyepieces	3-6
Barlow Lenses	6
Eyepiece & Filter Kits	7
Eyepiece Filters	8-9
Solar Filters	9
Binocular Viewer	10
Mirror & Erect Image Diagonals	10
Finderscopes	11
SkySync GPS & Accessories	12
NexRemote Software & Flashable Hand Controls	13
T-Rings	14
T-Adapters	14-15
NexImage Kit	16
Digital Camera Adapter	16
Piggyback Camera Mount	17
Deluxe Tele-Extender	17
Reducer/Corrector Lens	17
Radial Guider	18
NexGuide Autoguider	18
Counter Weights	18
Tripods	19-20
Vibration Suppression Pads	20
Wedges & Drives	21
Mounts	22-25
PowerTank & Power Adapters	26
Cases	27
Binocular Tripod Adapter	27
Visual Back	27
Night Vision Flashlight	27
LensPen	27
Lens Shades, CD-ROM, Sky Map	28
Appendix A – Eyepiece Filter Characteristics	29

SKYSCOUT® PERSONAL PLANETARIUM® ACCESSORIES

SKYSCOUT® EXPANSION CARDS

Featuring in-depth information on a variety of educational and entertaining topics, these cards provide additional text, audio, graphics and interactive lessons for your SkyScout that will help you better understand the universe around us.

- The "Astronomy For Beginners" Expansion Card includes in-depth information on objects in the sky, astronomical distances, star hopping and astro trivia.
- The "All About The Stars" Expansion Card includes in-depth information on star color, luminosity and magnitude, stellar evolution and astro trivia.

Model #93991 "Astronomy For Beginners" SkyScout Expansion Card

Model #93992 "All About The Stars" SkyScout Expansion Card



SKYSCOUT SCOPE 90

Designed exclusively for use with the SkyScout Personal Planetarium. Simply attach the SkyScout to the specially designed mount to locate and identify celestial objects. Once the SkyScout has located or identified an object it's time to take your celestial experience to the next level and use the SkyScout Scope to get a closer look at the wonders of the universe.

- Designed with non-magnetic materials that do not interfere with the SkyScout sensors
- Quick and easy no-tool setup
- 90 mm refractor optical design with all coated glass optics and 660 mm (f/7) focal length for crisp, clear images
- Erect image optics are ideal for terrestrial and astronomical use

Model #21068 SkyScout Scope 90



*Shown with SkyScout
Personal Planetarium
(not included)*

SKYSCOUT CONNECT

Allows the SkyScout Personal Planetarium to be connected directly to Celestron computerized telescopes. Locate any object in the SkyScout database and your computerized telescope will slew to the same object with the touch of a button.

Model #93980 SkyScout Connect



SKYSCOUT SPEAKER

- Rechargeable Lithium-Ion battery
- Extension cable – for flexible placement of speaker
- Nylon Lanyard – to hang the speaker around your neck
- Expandable woofer – for optimum sound quality

Model #93985 SkyScout Speaker



EYEPIECES

OMNI SERIES

If you are looking to move up to a higher quality eyepiece, the Omni series provides more enhanced features in a wider selection of focal lengths. Celestron designed this series with the finer points in mind so you, the user, can benefit from the features that make this series unique.



- 4-element premium symmetrical Plössl optical design
- Features blackened lens edges to minimize internal reflection and maximize contrast
- Multi-layer coating group on each lens surface
- Two-step anodizing process to prevent reflection from the top of the eyepiece barrel, where other manufacturers use reflective surfaces
- Threaded barrels accept 1.25" Celestron thread-in filters

Model #	Description	Size	Focal Length	Field of View	Coatings	Eye Relief
93316	Omni	1.25"	4 mm	52°	Multi-Coated	6 mm
93317	Omni	1.25"	6 mm	52°	Multi-Coated	5 mm
93318	Omni	1.25"	9 mm	52°	Multi-Coated	6 mm
93319	Omni	1.25"	12.5 mm	52°	Multi-Coated	8 mm
93320	Omni	1.25"	15 mm	52°	Multi-Coated	13 mm
93321	Omni	1.25"	20 mm	52°	Multi-Coated	20 mm
93322	Omni	1.25"	25 mm	52°	Multi-Coated	22 mm
93323	Omni	1.25"	32 mm	52°	Multi-Coated	22 mm
93325	Omni	1.25"	40 mm	43°	Multi-Coated	31 mm

X-Cel LX SERIES

The newly enhanced X-Cel LX eyepiece series is what you've been waiting for in a high quality eyepiece for planetary viewing. With a brand new sleek and robust design and a twist-up eye guard, these eyepieces are especially designed for comfort and ease of use. They also have a wide field of view of 60° and 6-element fully multi-coated optics for magnificent wide field performance. X-Cel LX eyepieces are parfocal and require little to no focusing when changing from low to high power.

The X-Cel LX series is offered in the following seven sizes:

2.3 mm, 5 mm, 7 mm, 9 mm, 12 mm, 18 mm and 25 mm.



- Wide field of view enhances views of the night sky through a single lens.
- 6-element fully multi-coated optics create sharper images
- No slip, rubber grip ring for secure handling, even in moist conditions

Model #	Description	Size	Focal Length	Field of View	Coatings	Eye Relief
93420	X-Cel LX	1.25"	2.3 mm	60°	Fully Multi-Coated	16 mm
93421	X-Cel LX	1.25"	5 mm	60°	Fully Multi-Coated	16 mm
93422	X-Cel LX	1.25"	7 mm	60°	Fully Multi-Coated	16 mm
93423	X-Cel LX	1.25"	9 mm	60°	Fully Multi-Coated	16 mm
93424	X-Cel LX	1.25"	12 mm	60°	Fully Multi-Coated	16 mm
93425	X-Cel LX	1.25"	18 mm	60°	Fully Multi-Coated	16 mm
93426	X-Cel LX	1.25"	25 mm	60°	Fully Multi-Coated	16 mm

EYEPIECES

ULTIMA® LX SERIES

Ultima LX Series parfocal eyepieces feature wide fields of view for high and low magnifications.

- Extendable twist-up eyecups – Good for eyeglass wearers
- Parfocal eyepiece - Little or no focusing is needed when changing from low to high power
- Threaded barrels - Accept 1.25" or 2" Celestron thread-in filters
- Shock resistant rubber covering - Scratch and dent resistant
- No slip grip - Designed for secure handling even in moist conditions
- Roll guard - Ergonomic contours prevent eyepiece from rolling off flat surfaces
- 28mm clear aperture surface lens - For comfortable viewing



Model #	Description	Size	Focal Length	Field of View	Coatings	Eye Relief
93366	Ultima LX	1.25" - 2"	5 mm	70°	Fully Multi-Coated	16 mm
93367	Ultima LX	1.25" - 2"	8 mm	70°	Fully Multi-Coated	16 mm
93368	Ultima LX	1.25" - 2"	13 mm	70°	Fully Multi-Coated	16 mm
93369	Ultima LX	1.25" - 2"	17 mm	70°	Fully Multi-Coated	16 mm
93375	Ultima LX	2"	22 mm	70°	Fully Multi-Coated	16 mm
93376	Ultima LX	2"	32 mm	70°	Fully Multi-Coated	16 mm

AXIOM® LX SERIES

The Axiom LX premium eyepieces feature scratch resistant, high end design and wide fields of view for high and low magnifications.

- Retractable eyecups - Ultra-low profile for eyeglass wearers
- Parfocal eyepiece - Little or no focusing is needed when changing from low to high power
- Threaded barrels - Accept 1.25" or 2" Celestron thread-in filters
- Polished and hard anodized aluminum barrel - Scratch resistant and high-end appearance
- Rubber gripping ring - For secure handling and smooth control of eyecup



Model #	Description	Size	Focal Length	Field of View	Coatings	Eye Relief
93394	Axiom LX	1.25"	7 mm	82°	Fully Multi-Coated	13 mm
93395	Axiom LX	1.25"	10 mm	82°	Fully Multi-Coated	13 mm
93396	Axiom LX	1.25"	15 mm	82°	Fully Multi-Coated	13 mm
93397	Axiom LX	2"	19 mm	82°	Fully Multi-Coated	13 mm
93398	Axiom LX	2"	23 mm	82°	Fully Multi-Coated	17 mm
93399	Axiom LX	2"	31 mm	82°	Fully Multi-Coated	21 mm

EYEPIECES

MICRO GUIDE EYEPIECE

This multi-function guiding eyepiece features a laser-etched reticle with a built-in battery illuminator. The eyepiece is a multi-coated 12.5 mm Abbe (4-element) Orthoscopic.

Usage possibilities include: direct guiding on stars outside the center of the field of view; greatly improved off-axis guiding to capture much fainter, sharply focused guide stars without reducing limiting magnitude and measuring position angles and separation of double stars.

- 42° apparent field of view
- Free of internal reflections and offers sufficient eye relief for the reticle to be viewed easily, even with eyeglasses
- Etched micrometer scale has gradations 50 microns apart and 15 microns wide
- Includes: eyepiece, built-in cordless illuminator with adjustable brightness control, batteries and instructions



Model #	Description	Size	Focal Length	Field of View	Coatings
94171	Micro Guide Eyepiece	1.25"	12.5 mm	42°	Multi-Coated

8-24 MM ZOOM EYEPIECE

Super-premium fully multi-coated 1.25" zoom eyepiece has a focal length of 8-24 mm. This zoom eyepiece offers users expanded magnification options and convenient on the fly image adjustments, making this eyepiece the perfect addition to your eyepiece collection.

- Focal length of 8 mm to 24 mm
- Field of view: 40-60 degrees
- Eye relief: 15-18 mm
- Fully Multi-Coated optics



Model #	Description	Size	Focal Length	Field of View	Coatings
93230	Zoom Eyepiece	1.25"	8 mm-24 mm	40°-60°	Fully Multi-Coated

EYEPIECES and BARLOW LENSES

COLLIMATION EYEPIECE

The Celestron Cheshire Collimation Eyepiece is ideal for precise collimation of Newtonians and helpful for aligning Schmidt-Cassegrains. This special eyepiece fits into 1.25" focusers or diagonals. Alignment is easy using the small opening on one end and thin cross hairs at the other end. The collimation eyepiece is more accurate than the simple collimation tool.

Model #94182 Cheshire Collimation Eyepiece



OMNI® BARLOW

The Omni Barlow is a high quality 2x Barlow lens that doubles the magnification of all 1.25" eyepieces. This economically priced Barlow has great features like low profile, 2-element, fully multi-coated optical design and blackened lens edges.

Model #93326 2x Omni Barlow Lens – 1.25"



ULTIMA® BARLOW

This Ultima Barlow lens is the #1 choice among amateur astronomers who want the best performance from their optics. The Ultima Series Barlow (2x - 1.25") is an air-spaced, 3-element apochromatic design with a 27mm clear aperture.

This lens features a very high quality, fully multi-coated design. Amazingly compact and lightweight, at just 5 ounces and 2.75" in length.

Model #93506 2x Ultima Barlow Lens – 1.25"



EYEPIECE and FILTER KITS

1.25" EYEPIECE AND FILTER KIT

The Eyepiece and Filter Kit contains:

- Five Superior Grade Plössl 1.25" Eyepieces – 4-element design with a 52° AFOV (32 mm has 44°), superb color resolution, edge sharpness and clarity. All eyepieces are fully multi-coated for maximum contrast and resolution. Supplied are a 4 mm, 6 mm, 9 mm, 15 mm, and 32 mm.
- 1.25" Barlow Lens - 2x – Compliments the Plössl eyepieces in this kit and gives you a total of ten power combinations. High grade glass optics with fully multi-coated lenses are used so there is no degradation of image.
- Six Colored 1.25" Eyepiece (Lunar and Planetary) Filters – Included are Kodak Wratten #12 (deep yellow), #21 (orange), #25 (red), #56 (light green), #58 (green), and #80A (blue). Since you have all the eyepieces necessary to study the planets and moon in detail, these filters will greatly enhance your enjoyment of our solar system. **For detailed filter characteristics see Appendix A on page 29.**
- 1.25" Moon Filter – A neutral density filter which allows you maximum enjoyment of the moon especially during the brighter phases.
- Aluminum Carrying Case – This sturdy and well-built case fits all of the above items in the die-cut foam interior and has room for additional accessories.

Model #94303 Eyepiece and Filter Kit – 1.25"



2" EYEPIECE AND FILTER KIT

The 2" Eyepiece and Filter Kit contains:

- Three E-Lux 2" Eyepieces – 3-element fully multi-coated optical design with a 56° apparent field of view (40 mm has 50°). Comes with 26 mm, 32 mm and 40 mm focal lengths.
- 2" 2x Barlow Lens – doubles the magnifying power of your eyepiece by doubling its effective focal length. The E-Lux 2x Barlow is fully multi-coated and gives you a total of six power combinations.
- Five Colored 2" Eyepiece (Lunar and Planetary) Filters – Included are Kodak Wratten #12 (deep yellow), #21 (orange), #25 (red), #58 (green), and #80A (blue). These filters will greatly enhance your enjoyment of our solar system. **For detailed filter characteristics see Appendix A on page 29.**
- 2" Mirror Diagonal – This high quality 90-degree multi-coated mirror diagonal allows you to take advantage of the wider field of view provided by 2" eyepieces. It fits all rear cells of Schmidt-Cassegrain telescopes and includes an adapter to use with refractor telescopes.
- Aluminum Carrying Case – This sturdy case holds all items neatly in a die-cut foam interior.

Model #94305 Eyepiece and Filter Kit – 2"



1.25" EYEPiece FILTER SETS

Celestron color filters are mounted in black anodized aluminum cells with the Kodak Wratten Series Number individually engraved. Each set of 4 comes packed in a plastic case. The cells of each filter are double-threaded, so they can be stacked (piggybacked) in various combinations. This allows you to create different color combinations and transmission characteristics, or to have the same color characteristic, but with a lower transmission. When stacking color filters, the effective transmission of the combination you create is equal to the product of the spectral transmission of each of the filters used.



Eyepiece filters are an invaluable aid in lunar and planetary observing. They reduce glare and light scattering, increase contrast through selective filtration, increase definition and resolution, reduce irradiation and lessen eye fatigue. Celestron's filters are made of high quality, solid plane parallel glass with excellent homogeneity. They are anti-reflection coated to prevent glaring and ghosting. All eyepiece filters are threaded to fit Celestron's, and most other manufacturer's, 1.25" eyepieces, and offer a full 26 mm clear aperture.

For detailed filter characteristics see Appendix A on page 29.

Model #94119-10 Eyepiece Filter Set - 1.25" (#21, #80A, #15 and ND-25)

1.25" MOON FILTER

Celestron's Moon Filter is an economical eyepiece filter for reducing the brightness of the moon and improving contrast, so greater detail can be observed on the lunar surface. The clear aperture is 21 mm and the transmission is about 18%.



Model #94119-A 1.25" Moon Filter

1.25" UV/IR CUT-OFF FILTER

The ultimate UV and Infrared blocker, featuring hard ion beam coatings, and fine optically polished glass. The ideal filter for NexImage and CCD imaging.

Freedom from ghost images (very low reflection multi-coating) enables pinpoint star images and fine planetary detail. Features an extremely sharp cut-off at 690nm yet leaves all the visible red, including the important 656nm H-alpha emission line, preventing IR wavelengths from blurring fine detail in digital images.



Model #94125 1.25" UV/IR Cut-off Filter

OXYGEN III NARROWBAND FILTERS

The OIII narrowband filter isolates just the two doubly-ionized oxygen lines (496 and 501nm lines) emitted by planetary and emission nebulae, while blocking the rest of the overall spectrum of light. The result is extreme contrast between the black sky background and the faint photons of OIII light needed for detailed views of the Veil, Ring, Dumbbell, Crescent and Orion nebulae.

Each filter has an ultra hard, vacuum-deposited coating carefully designed to block all of the visual spectrum ranging from 400 to 700 nm. This eliminates the unnatural colored halos surrounding bright stars common with OIII filters of less sophisticated coating technology.



#93623

Model #93623 1.25" Oxygen III Narrowband Filter

Model #93624 2" Oxygen III Narrowband Filter

FILTERS

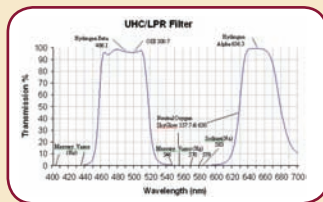
UHC/LPR FILTERS

Our Light Pollution Reduction (LPR) Filters are designed to selectively reduce the transmission of certain wavelengths of light, specifically those produced by artificial light. This includes mercury vapor, and both high and low pressure sodium vapor lights and the unwanted natural light caused by neutral oxygen emission in our atmosphere (i.e. sky glow).

The Ultra High Contrast (UHC) LPR filter has improved contrast over the typical broadband filters. Sky background is darker, and contrast of emission nebulae are noticeably improved. The advanced technology coatings enable the filter to achieve an outstanding transmission of over 97% across the entire bandpass, with total blockage of prominent light pollution lines. The perfect filter for viewing nebulae from light polluted skies, or for boosting the contrast of nebulae from dark sky sites.

The multi-layer dielectric coatings are plasma assisted and ion beam hardened using the latest technology for durability and resistance to scratching.

Model #94123 1.25" UHC/LPR Filter **Model #94124** 2" UHC/LPR Filter



#94124

SOLAR FILTERS

Featuring Baader Astro Solar™ Safety Film is clear and homogenous and attains the optical performance of high quality plane-parallel glass filters—it is diffraction limited! Double-sided metal coatings have uniform density and good color balance across the entire field ensuring razor sharp images from edge to edge.

The Sun appears in its "real" color—neutral white, not blue or orange, and the sky adjacent to the solar limb is jet black. See detail in sunspots, bright faculae near the limb and the mottled areas known as granules with these filters. The Sun offers constant changes and will keep your observing interesting and fun, even with small aperture telescopes.

The Astro Solar™ film absorbs all ultraviolet rays while coating reflects infrared light rendering both absolutely harmless. For added assurance, Baader Astro Solar™ film has been declared safe for direct solar viewing by the German National Bureau of Standards for eye safety.

Each is mounted in a durable ABS or rubber cell that won't break.

Model #94232 Solar Filter for Omni XLT127 and NexStar 5SE

Model #94139 Solar Filter for NexStar 130SLT, AstroMaster 130 and PowerSeeker 127

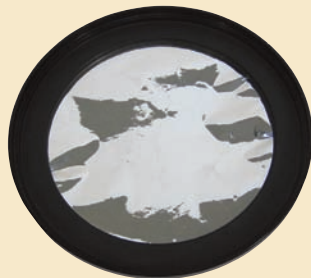
Model #94129 Solar Filter for NexStar 4SE

Model #94236 Solar Filter for NexStar 6SE

Model #94128 Solar Filter for CPC800, NexStar 8SE and 8" SCT

Model #94237 Solar Filter for CPC925 and 9.25" SCT

Model #94238 Solar Filter for CPC1100 and 11" SCT



#94139

OPTICAL ACCESSORIES

STEREO BINOCULAR VIEWER

The Stereo Binocular Viewer allows you to adapt two eyepieces to your telescope and view with both eyes simultaneously. In addition to eliminating eye fatigue this bino viewer also provides a three dimensional effect while observing many celestial objects.

The Stereo Binocular Viewer will also improve contrast on deep sky objects as well as solar system objects. The Stereo Binocular Viewer is designed to work with Schmidt-Cassegrain telescopes (SCT) and many refracting telescopes. The Stereo Binocular Viewer requires you to use two eyepieces of equal focal lengths and optical design.

- Fully Multi-Coated BAK-4 prisms
- Foam lined aluminum storage case
- Eyepiece diopter scales for sharp focus

Model #93691 Stereo Binocular Viewer



2" XLT DIAGONAL

The 2" XLT diagonal is a high quality multi-coated mirror diagonal which allows you to take advantage of the wider field of view provided by 2" eyepieces. Featuring our premier StarBright XLT® coatings, this unit has an interferometer tested 1/10th wave flat mirror.

This premium diagonal is designed to work with Schmidt-Cassegrain and Edge HD telescopes. Includes a 1.25" adapter and sturdy aluminum carrying case.

Model #93527 2" XLT Diagonal for Schmidt-Cassegrain Telescopes



1.25" STAR DIAGONAL

Our Star Diagonal lets you view objects while at a 90° angle from the direction the telescope is pointing, thereby allowing comfortable viewing when the telescope is pointed at, or near, the zenith (i.e. directly overhead). The resulting image is right side up, but will be reversed from left to right.

Model #94115-A 1.25" Star Diagonal



1.25" ERECT IMAGE DIAGONAL – 45°

Celestron's 1.25" Erect Image Diagonals are an Amici prism design. This design allows you to look into the telescope at a 45° angle, at images that are oriented properly, meaning the image is upright and correct from left to right.

Model #94112-A 1.25" Erect Image Diagonal



OPTICAL ACCESSORIES

STARPOINTER™ FINDERSCOPE

Finding objects couldn't be easier! A 1x, or unit power, finderscope designed so you can point the telescope while scanning the sky with both eyes. A mirror lens projects the image of a LED illuminated pinpoint into the line of sight, providing you with a red dot of light to center on the object you want to view.

Similar to having a laser pointer that reaches into the sky, it greatly simplifies finding objects. The brightness level is adjustable and the StarPointer can be used during daytime observing as well. Attaches to any SCT telescope. Includes: StarPointer Finderscope, 2 mounting brackets and battery.

Model #51630 StarPointer Finderscope



LASER FINDERSCOPE KIT

General Features:

- 5mW green laser
- Two Mounting brackets; one for dovetail mounts, one for SCT telescope
- Quick release dovetail attachment allows dual use as a pointing device for your telescope or as a hand held star pointer
- X-Y alignment screws for quick and accurate alignment

The Telescope Mounted Laser Finderscope Kit includes:

- Green Laser Finder (with two alignment screws and one mounting screw)
- Mounting Bracket With Dovetail
- Mounting Bracket With Holes (SCT)
- Long life CR123A battery

Model #93774 Laser Finderscope Kit



NAVIGATIONAL ACCESSORIES

SKYSYNC GPS ACCESSORY

Improve the accuracy of your initial star alignments by plugging the GPS module into your telescope's drive base port. The SkySync will link up and automatically download the exact time, date, longitude and latitude from one of many global positioning satellites.

- 16-channel GPS module
- Compatible with all non-GPS Celestron computerized telescopes
- Plugs into your telescope's hand control or auxiliary port
- Links up and automatically downloads information from orbiting global positioning satellites
- Kit includes SkySync GPS Accessory and two mounting straps

Model #93969 SkySync GPS Accessory



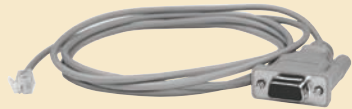
NEXSTAR® RS-232 CABLE

Allows your computerized telescopes to be controlled using a laptop computer or PC. Once connected to your hand control port, the telescope can be controlled using popular astronomy software programs. This cable connects to your PC's serial port.

Also used to upgrade hand control software for flash upgradeable hand controls.

For use with a USB port, you must purchase a serial to USB converter (18775). Length: 62"

Model #93920 NexStar RS-232 Cable



USB TO RS-232 CONVERTER CABLE

This cable is used to convert a serial cable into a cable that is compatible with standard USB ports. Recommended for use with our RS-232 cable (93920) and our Programming Cable (93922) which both feature serial connectors.

Model #18775 USB to RS-232 Converter Cable



NAVIGATIONAL ACCESSORIES

FLASHABLE CELESTRON NEXSTAR HAND CONTROLS

This flashable Celestron NexStar hand control comes in 3 versions and is compatible with NexStar SLT and LCM series computerized telescopes, Advanced, CGEM and CGE Pro series computerized telescopes or NexStar SE and CPC GPS series computerized telescopes.

Model #93996 Hand Control - Flashable - For SLT and LCM

Model #93997 Hand Control - Flashable - For ADV, CGEM, CGE PRO

Model #93998 Hand Control - Flashable - For SE and CPC



NEXREMOTE® TELESCOPE CONTROL SOFTWARE

Now your Celestron Advanced Series GT, NexStar "i" Series, NexStar SLT Series, NexStar SE Series, CPC GPS Series, and CGE Series telescope can be set up and operated remotely from a PC or laptop! NexRemote duplicates all of the functions and features of our NexStar software on the standard NexStar® Hand Control plus much more!

- NexRemote talks - Keep your eyes on the stars instead of the LCD by enabling speech support
- Control the objects you want to see and the order that you see them
- Create and save custom tours by launching NexTour
- Use Night Vision Mode to reduce the effect of the laptop screen on your eyes
- Wireless control of the telescope with Optional Gamepad Support
- Connect your personal GPS device to NexRemote with NexGPS
- Download NexRemote updates online to use the latest features



Kit Includes:

- NexRemote Software CD with license
- RS-232 Cable to connect telescope to PC or Laptop
- Serial-To-USB Adapter

When gamepad support is enabled, NexRemote uses the Logitech WingMan Cordless RumblePad as a means of remotely controlling the telescope operation. This is particularly useful when aligning the telescope with NexRemote and the PC is not within reach.

*NexRemote is included with NexStar SE Series, CPC and CGE Series telescopes

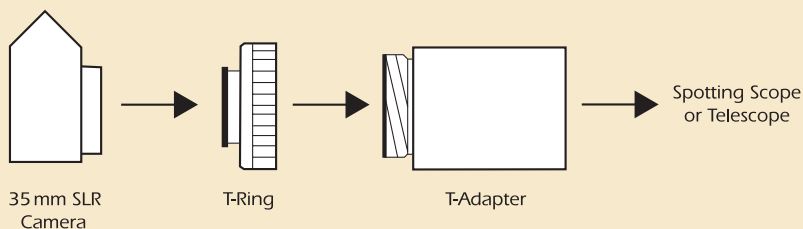
Model #93710 NexRemote Telescope Control Software Package (Includes Software, RS-232 Cable and Serial to USB Adapter)

Model #93702 NexRemote Telescope Control Software (Software Only)

T-RINGS FOR 35MM CAMERAS

A T-Ring couples your 35 mm camera body to a T-Adapter, Radial Guider or Tele-Extender. This accessory is required if you want to do any type of photography through a telescope or spotting scope. Each camera manufacturer has a different mount, which requires a specific T-Ring, so Celestron offers a full line of T-Rings.

To use a T-Ring, remove the diagonal and/or eyepiece from your telescope (some models require use of an eyepiece — see your instruction manual). Then you need only remove your normal camera lens, attach the proper T-Ring for your camera, and mount the combination to the rear cell of your telescope or spotting scope with a Celestron T-Adapter.



CANON T-RING ADAPTERS

This T-Ring is designed to work with Canon EOS brand 35 mm cameras.

Model #93419 Canon EOS T-Ring Adapter



MINOLTA T-RING ADAPTERS

This T-Ring is designed to work with Minolta Maxxum brand 35 mm cameras.

Model #93418 Minolta Maxxum T-Ring Adapter

NIKON T-RING ADAPTER

This T-Ring is designed to work with Nikon brand 35 mm cameras.

Model #93402 Nikon T-Ring Adapter



IMAGING ACCESSORIES

1.25" UNIVERSAL T-ADAPTERS

Universal 1.25" T-Adapter fits (drop in style) any type of telescope that uses a 1.25" focuser or visual back.

A T-Adapter allows you to attach your 35 mm SLR camera to the prime focus of your telescope or spotting scope. This arrangement is used for terrestrial photography and short exposure lunar and planetary photography. It can also be used for long exposure deep-sky photography when using a separate guide scope.

Both a T-Adapter and T-Ring are required to mount a 35 mm SLR camera to your instrument.

Model #93625 1.25" Universal T-Adapter

Model #93640 1.25" Universal T-Adapter – Similar to #93625 but features an integral 2x Barlow lens which can be used visually or photographically



T-ADAPTERS FOR TELESCOPES and SPOTTING SCOPES

A T-Adapter allows you to attach your 35 mm SLR camera to the prime focus of your telescope or spotting scope. This arrangement is used for terrestrial photography and short exposure lunar and planetary photography. It can also be used for long exposure deep-sky photography when using a separate guide scope.

Both a T-Adapter and T-Ring are required to mount a 35 mm SLR camera to your instrument.

Model #93633-A T-Adapter – For C5, C6, C8, C9.25, C11 and C14 Telescopes

Model #93635-A T-Adapter – For NexStar 4SE, C90 Mak and C130 Mak Scopes

Model #93644 T-Adapter – For EdgeHD 8

Model #93646 T-Adapter – For EdgeHD 925, 11 and 14

IMAGING ACCESSORIES

NEXIMAGE® – SOLAR SYSTEM IMAGER

NexImage® is a complete CCD solar system imager capable of producing high quality planetary images with greater light sensitivity and color fidelity than comparable CMOS imagers. Combined with the NexImage software package, NexImage can bring out tremendous detail and reveal a final image that will rival those taken with astronomical CCD cameras costing thousands of dollars more.

Compatibility – 1.25" adapter barrel makes NexImage compatible with most any telescope

Versatility – 1.25" adapter is threaded for standard eyepiece filters and can be removed and replaced with optional focal reducer lens

- View and capture live video on your computer screen
 - Software automatically filters out video frames most affected by poor atmospheric "seeing" leaving the sharpest, clearest frames to be stacked and aligned into one high quality image
 - Easy to follow quick start instructions and tutorial with sample video file that will have you producing quality images your first night out
 - Camera control software allows you to manually change the gain, contrast, exposure time, frame rate and color saturation using your PC
- Recommended Minimum System Requirements
- PC running Windows 98SE to Windows 7 (64 bit)
 - 333Mhz Pentium II or better
 - 128 MB of RAM and 40 MB of hard drive space
 - Screen resolution of 1024x768 or higher

Model #93712 NexImage – Solar System Imager

Model #94178 NexImage Reducer Lens – Increase your field of view by over two times for wide field lunar and filtered solar imaging.



UNIVERSAL DIGITAL CAMERA ADAPTER

Universal mounting platform for digital point and shoot cameras that allows you to do afocal photography (photography through the eyepiece of a telescope or a spotting scope) using a 1.25" or 2" eyepiece.

Model #93626 Universal Digital Camera Adapter

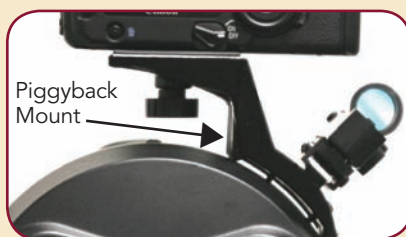


IMAGING ACCESSORIES

PIGGYBACK MOUNT

The Celestron Piggyback Mount is a great accessory for all observers interested in deep-sky astrophotography. This specially designed adapter allows you to attach your camera to the top of any Celestron SCT/ EdgeHD telescope. When using with a NexStar SE model, the adapter can be mounted while still utilizing your StarPointer finderscope for telescope alignment.

Model #93609 Piggyback Mount



DELUXE TELE-EXTENDER

The Deluxe Tele-Extender allows you to attach a camera to your Schmidt-Cassegrain telescope, with an eyepiece installed. By using the Deluxe Tele-Extender in combination with an eyepiece, you can increase your instrument's effective focal length to well over 10,000 mm! This corresponds with a matching increase in image size. This technique is known as eyepiece projection photography. The following formula can be used to determine approximate effective focal length:

$$EFL = \text{Telescope focal length} / \text{Eyepiece focal length} \times DF$$

(the distance from the center of the eyepiece to the film).

The Deluxe Tele-Extender is used for high-power lunar, solar and planetary photography as well as for extreme terrestrial photography. It fits over the telescope's eyepiece and connects to the visual back of the telescope. Optional counterweights will be necessary to properly balance the telescope when using the Tele-Extender.



To use the Deluxe Tele-Extender, remove the diagonal from your telescope and insert an eyepiece directly into the visual back. Place the Tele-Extender over both the eyepiece and the visual back, then attach your 35 mm SLR camera to the back of the Tele-Extender, using a T-Ring. The Tele-Extender's built-in safety device will help prevent your eyepiece from becoming accidentally dislodged.

There are a few things to keep in mind when using this accessory. First, the image you'll see through your camera's viewfinder will be upside-down. Secondly, due to the extremely high magnifying effect afforded by this accessory, extra care to prevent camera and telescope vibration, accurate polar alignment and use under good seeing conditions will all assist you in capturing high quality images.

Model #93643 Deluxe Tele-Extender

REDUCER/CORRECTOR F/6.3

This combination focal reducer and field corrector lens accessory works with all Celestron 5", 6", 8", 9.25", 11" and 14" Schmidt-Cassegrain telescopes. This four-element, fully multi-coated f/6.3 Reducer/Corrector makes it possible to have a dual focal ratio instrument, without sacrificing image quality. The Reducer/Corrector is f/6.3 for C5, C6, C8, C9.25 and C11 telescopes and f/7 for the C14 telescope.

It offers wide fields of view with any Schmidt-Cassegrain telescope. Reduces astrophotography exposure time by a factor of 3. Results are amazing, both visually and photographically.

Model #94175 Reducer/Corrector f/6.3



IMAGING ACCESSORIES

RADIAL GUIDER

Specifically for use in prime focus, deep-sky imaging or astrophotography with Schmidt-Cassegrain telescopes. This accessory allows you to simultaneously photograph and guide through the optical tube assembly of your telescope. It also eliminates the problem of differential flexure, because you are guiding and photographing through the telescope.

Compatible with Celestron's C5, C6, C8, C9.25, C11 and C14 telescopes the radial guider features a unique prism angle adjustment screw. It must be used with a guiding eyepiece, camera T-Ring and drive corrector (dual axis preferred). Primarily for use with catadioptric telescopes.

This guider is a tremendous improvement over conventional off-axis guiders. Not only is the angle of the prism tunable, but it also maintains a fixed rigid camera orientation while still offering users the freedom to move the guiding eyepiece radially about 135°.

Model #94176 Radial Guider



NEXGUIDE AUTOGUIDER

The NexGuide stand-alone autoguider eliminates the need for a laptop computer in the field. Perfect for imaging with your DSLR camera.



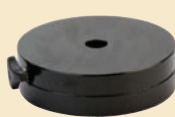
- Stand-Alone autoguider eliminates the need for a laptop computer
- Sensitive CCD sensor allows you to track on fainter stars
- Larger chip provides more area for locating and keeping guide star on chip
- Automatic calibration of each axis in addition to automatically setting guide rate parameters
- Battery pack provides free and unrestricted use in the field
- Standard ring allows you to use any 1.25" eyepiece for centering and focusing
- 9-Button hand control allows quicker access to navigate menus



Model #93713 NexGuide Autoguider

EXTRA COUNTERWEIGHTS

Using accessories such as cameras, Lens Shades, Tele-Extenders and the 2" Diagonal



#94186



#94203



#94189



#94187

will affect the balance of your Celestron Schmidt-Cassegrain telescope. Counterweights restore proper balance, increasing ease in handling and improved tracking accuracy.

You don't need perfect balance to operate your telescope. In fact, it's not always possible to achieve perfect balance with fixed-position weights. All you need to do is reduce, or eliminate, swing when R.A. and DEC locks are released. Celestron counterweights help you achieve the desired balance and stability with ease.

Model #94186 11 lb Counterweight for Use With CG-5 Mounts

Model #94203 11 lb counterweight for Use With CGEM Mounts

Model #94189 11 lb counterweight for CG-5 Mount

Model #94187 22 lb counterweight for CGE Pro Mount

TRIPODS

PHOTOGRAPHIC AND VIDEO TRIPOD

Standard photo/video tripod is extremely light and portable while performing well with most mid-size optical products (binoculars, spotting scopes).

Features quick release bracket and pan handle control.

Recommended for all Celestron binoculars (except 80 mm and larger apertures) and Ultima 65 and 80 mm spotting scopes.

Includes 1/4"-20 mounting screw.

- Carrying handle and carrying case
- Max. extended height - 63 inches
- Folded height - 27 inches
- 3-way panhead with quick release plate
- 90° vertical platform
- Central column with geared elevator and adjustable tension
- Horizontal and Vertical Bubble Level

Model #93606 Photographic and Video Tripod



HEAVY DUTY ALT-AZIMUTH TRIPOD

Heavy-duty alt-azimuth tripod features sturdy aluminum tripod legs with accessory tray and slow motion flex cables for fine adjustments.

Recommended for 80 mm and larger aperture binoculars, Ultima 80 and 100 spotting scopes, C90 and C130 Mak spotting scopes and the C5 spotting scope.

- Extendable aluminum tripod legs with heavy duty mount head
- Sliding 1/4"-20 mounting screw
- Flexible slow motion cables for both altitude and azimuth
- Max extended height - 45 inches
- Folded height - 32 inches

Model #93607 Heavy Duty Alt-Azimuth Tripod



NEXSTAR® 4SE AND 5SE TRIPOD WITH BUILT-IN WEDGE

A stable tripod is a must for serious astronomical observing and photography. This steel field tripod folds down to a compact 8"x28". It is equipped with a built-on 20°-90° wedge tilt plate for quick equatorial use and astrophotography. It has a metal center brace and accessory tray for added stability. Weight 10 lbs. Height extendable from 28" to 48".

Model #93497 Nexstar 4SE and 5SE Tripod with Built-In Wedge



HEAVY DUTY TRIPOD

The Celestron HD tripod is the same tripod included with our top of the line CPC 1100 telescope. It has fully adjustable legs with metal clamps for solid height adjustment. Comes with a heavy duty, metal accessory tray that maximizes the stability of the tripod. The tripod head has mounting holes for both alt-az mounting (CPC, NexStar GPS) and for use with a wedge.

Model #93493 Heavy Duty Tripod



VIBRATION SUPPRESSION PADS (VSP)

Telescope and spotting scope vibration is caused by windy conditions, an unsteady mount or tripod or even an accidental bump to the instrument, and results in reduced image quality.

Celestron's set of three Vibration Suppression Pads will reduce vibration time by almost 100% and decrease vibration amplitude. The pads fit between the bottom of the tripod legs and the ground, a simple and functional solution to the problem of image disturbance. They work on any surface: grass, dirt, concrete, asphalt, wood, etc.

Model #93503 Vibration Suppression Pads



WEDGES and DRIVES

HD PRO WEDGE

Celestron's HD Pro Wedge is designed to support our fork mounted Schmidt-Cassegrain telescopes up to 11". The HD Pro provides a heavy duty, stable platform that is perfect for astroimaging and guarantees minimal vibration. A low latitude range of 0-90 degrees makes this wedge functional for use at the equator. Built-in features include altitude/azimuth adjustment controls with oversized knobs attached for easy polar alignment, a hand control holder that provides the option of placing the hand control on the wedge or the fork arm, a tilt plate for easier mounting of the telescope by simply rotating the scope onto the wedge, and a large 14 mm diameter latitude adjustment screw to add strength and stability while supplying less vibration and easier rotation with a heavy telescope.

HD PRO WEDGE FEATURES:

- 0-90 Degree Latitude Range - Low latitude range, perfect for use at the equator.
- Built-in Altitude/Azimuth Controls - Oversized knobs attached to wedge for easy polar alignment.
- Built-in Hand Control Holder - Allows user to place the hand control on the wedge or fork arm. Hand control won't fall off when fork arm is angled towards the ground.
- Tilt Plate - Recess holes allow the base of scope to drop into place just by rotating.
- Heavy Duty Side Plates - More rigid with more material provides less vibration while imaging.
- 14 mm Diameter Latitude Adjustment Screw - Adds strength and stability. Does not flex or bend providing less vibration and making it easier to rotate a heavy telescope.

Model #93664 HD Pro Wedge



DUAL AXIS MOTOR DRIVE FOR OMNI SERIES CG-4 MOUNT

This dual axis motor drive with drive corrector capabilities, is designed for Celestron's CG-4 mounts for tracking in RA and allows movement in DEC. It precisely controls the telescope's tracking speed during long, timed exposures of celestial objects, producing the best possible image sharpness. Precision drive correctors are a must for those with a serious interest in astrophotography or CCD imaging. Four speeds are available – 1x (sidereal), 2x for guiding, 4x, and 8x for centering.

This precision, state-of-the-art DC motor drive operates from 4 D-cell batteries (user supplied). The hand controller module is very compact and fits easily in the palm of your hand. Motors for both axes are included, along with brackets, clutch and hardware.

Model #93522 Motor Drive for CG-4 Mount

Model #93514 Motor Drive for AstroMaster and PowerSeeker



#93522



#93514

LCM COMPUTERIZED MOUNT

- AltAz Computerized mount, as supplied with all LCM telescopes
- NexStar technology with database for automatic slewing (GoTo) and tracking of over 4,000 objects
- Flash upgradeable hand control with SkyAlign alignment procedure
- TheSkyX First Light Edition astronomy software

Model #91206 LCM Computerized Mount



NEXSTAR SLT COMPUTERIZED MOUNT

- AltAz Computerized mount as supplied with all NexStar SLT telescopes
- NexStar technology with database for automatic slewing (GoTo) and tracking of over 4,000 objects
- Flash upgradeable hand control with SkyAlign alignment procedure and NexStar technology
- NSOL telescope control software for controlling NexStar via laptop or PC
- Stainless steel tripod
- AC/DC operation (batteries not included)
- TheSkyX First Light Edition astronomy software
- CG5 style dovetail compatible

Model #91205 NexStar SLT Computerized Mount

OMNI CG-4 MOUNT

- German Equatorial mount and tripod as supplied with all Omni XLT Series telescopes
- Includes RA and DEC slow motion controls and setting circles
- Tripod has adjustable height 1.75" steel leg tripod with center brace/accessory tray
- Two counterweights - 7 lb and 4 lb

Model #91509 Omni CG-4 Mount



MOUNTS

ADVANCED SERIES CG-5 MOUNT

We are proud to offer a computerized GoTo version of Celestron's sturdy CG-5 mount.

- Heavy Duty German equatorial mount (same as supplied with Advanced Series telescopes)
- Ultra sturdy 2" diameter steel tripod with accessory tray
- Proven NexStar computer control technology
- 40,000 object database with 400 user-definable objects and expanded information on over 200 objects
- DC Servo motors with encoders on both axes
- Autoguider port for long exposure astrophotography
- Flash upgradeable hand control software and motor control units
- Compatible with optional NexRemote® telescope control software, for advanced control of your telescope via computer
- Hand control features a RS-232 communication port to control the telescope via a personal computer
- GPS-compatible with optional CN16 GPS Accessory (93966)

Model #91518 CG-5 Computerized Mount



NEXSTAR SE COMPUTERIZED MOUNT

- AltAz Computerized mount, 2 versions available (for NexStar 4 & 5 and 6 & 8 telescopes)
- NexStar technology with database for automatic slewing (GoTo) and tracking of 40,000 objects
- Flash upgradeable hand control with SkyAlign alignment procedure and NexStar technology
- NexRemote telescope control software
- RS-232 cable
- Steel tripod
- TheSkyX First Light Edition astronomy software
- Built-in Wedge (#91204 only)
- Camera control cable (#91204 only)
- CG5 style dovetail compatible

Model #91204 NexStar 4SE and 5SE Computerized

Model #91203 NexStar 6SE and 8SE Computerized





CGEM COMPUTERIZED MOUNT

The CGEM™ Mount has a fresh, attractive, bold appearance and is capable of carrying Celestron's higher-end SCT optical tubes (up to 11") securely and vibration free, which is ideal for both imaging and visual observing. Capable of holding over 40 lbs of payload and slewing at 5° per second, you will quickly reach any destination in the 40,000+ object database. Celestron's CGEM mount is the perfect fit between the CG-5 Mount and CGE Pro Mount. Offering the portability of the CG-5 and the precision of the CGE Pro.

Innovation – The CGEM series features All-Star™ (patent pending), our new polar alignment technology. All-Star allows users to choose any bright star, while the software calculates and assists with polar alignment. Another great feature of the CGEM is the Permanent Periodic Error Correction (PEC) which will allow users to train out the worm gears periodic errors, while the mount retains the PEC recordings. The CGEM will track well past the Meridian for uninterrupted imaging through the most ideal part of the sky.

Model #91526 CGEM Computerized Mount

MOUNTS

CGE PRO COMPUTERIZED MOUNT

Portability – Set up and transportation of the CGE Pro telescopes is made easy by separating the mount into smaller, easy-to-carry components. Unlike fork arm mounted telescopes, the CGE's optical tubes can be quickly removed from their mounts making even the CGE Pro1400 easily assembled in minutes.

Stability – Recognized for superior stability, German Equatorial mounts place the center of gravity directly over the tripod legs and can be easily polar aligned without the use of an optional equatorial wedge. This proven design reduces the "tuning fork" vibration that can be associated with undersized fork mounts. An improved Super HD Tripod supports the CGE Pro mount. This fully extendable tripod is made from the finest 2.75" stainless steel and can be raised to a height of 55". The tripod uses a dual leg support for maximum rigidity with an upper leg brace to provide an outward preload and a lower leg brace providing inward tension.

Balance – CGE Pro equatorial mounts can easily be balanced in both axes. Simply sliding the counterweight for Right Ascension and moving the optical tube along its dovetail mounting for Declination balance the weight of camera equipment and other visual accessories. This means that no additional weight needs to be added to balance the telescope when additional accessories are added.

Clearance – CGE Pro mounts support their tubes at a single contact point allowing the tube to move freely around its polar axis without making contact with the telescope's mount. Software features allow the user to set the mounts slew limits to guarantee safe motion. This is particularly useful when adding photographic and CCD instruments that extend from the rear of the telescopes.

All CGE mounted telescopes are compatible with Celestron's SkySync GPS accessory. Combine the GPS and built-in real time clock and these telescopes will keep track and remember their exact location and time without having to enter the information into the hand control.

- Holds a maximum instrument capacity of 90 lbs
- Weighs 154 lbs
- ± 9 arc second tracking accuracy, which can be further reduced with PEC
- Latitude Range: 10-65°
- 40,000 object database with over 100 user-definable objects and expanded information on over 200 objects

Model #91527 CGE Pro Computerized Mount



POWER SUPPLIES

POWERTANK™ 17

Take your telescope anywhere with this portable rechargeable power supply. The extra large 17 Amp hr PowerTank 17 is also useful as an emergency roadside accessory.

It includes an emergency light, siren, am/fm radio and booster terminals to start weak car batteries.

Model #18777 PowerTank 17



POWERTANK™

Not only useful for setting up and powering your scope, this 7 Amp hr model can also be useful as an emergency roadside accessory as it includes an emergency light, and booster terminals to start weak car batteries.

Model #18774 PowerTank

AC ADAPTER

5 Amp (CGEM, CGE Pro) –

- Works with CGEM or CGE Pro only
- Threaded barrel connector on DC plug prevents power-offs due to inadvertent cable pulls
- Delivers up to 5A @ 12VDC, plenty of power to run our biggest mounts with heavy loads
- Switching-type AC-to-DC power adapter provides more power with less weight than transformer-style power adapter

Model #18780 AC Adapter



AC ADAPTER

2.5 amp AC Adapter for use with all Celestron computerized telescopes (except CGE Pro).

Model #18778 AC Adapter

CAR BATTERY ADAPTER

For use with CGE, CPC, Advanced GT, NexStar Series, (all supplied standard), this adapter allows you to power your telescope directly via the car cigarette lighter or Celestron's PowerTank receptacle.

Model #18769 Car Battery Adapter



CASES / GENERAL ACCESSORIES

WATERPROOF HARD CASE FOR NEXSTAR® 6SE, 8SE AND CGE MOUNT/PIER

If you own a CGE* or NexStar® 6/8SE telescope, it's imperative that you protect your investment. Unbreakable, watertight, dustproof, chemical resistant and corrosion proof are some of the features of this premium case that offers total protection for your equipment. It is made of ultra high impact structural copolymer that makes it extremely strong and durable. Its exclusive .25" (6.4 mm) Neoprene o-ring and ABS latches seal perfectly and includes an automatic purge valve for quick equalization after changes in atmospheric pressure. The case is lined with die cut high-density foam for custom fitting. It features large handles and is equipped with wheels, for easy transportation. Made in the USA.

*For storing CGE mount and pier, must be used with foam that comes in original CGE mount packaging.

- Inside Dimensions 29" x 17.75" x 9.25"
- Weight 27.5 lb (12.47 kg)

Model #302070 Waterproof Hard Case for NexStar 6SE, 8SE and CGE Mount/Pier



BINOCULAR TRIPOD ADAPTER

This adapter allows you to mount your binocular (porro or roof) to a tripod for added stability and convenience

Model #93524 Binocular Tripod Adapter



1.25" VISUAL BACK

This accessory is used to adapt the threads on all Schmidt-Cassegrain models for use with 1.25" accessory items. This includes diagonals, straight through viewing with eyepieces, etc.

This item comes standard with all Celestron 5", 6", 8", 9.25" and 11" Schmidt-Cassegrains.

Model #93653-A 1.25" Visual Back

NIGHT VISION FLASHLIGHT

Celestron's premium model for astronomy, using two red LEDs to preserve night vision better than red filters or other devices. Brightness is adjustable. Operates on a single 9 volt battery (included).

Model #93588 Night Vision Flashlight



LENSPEN™ – OPTICS CLEANING TOOL

A superb tool in optical lens cleaning technology. Perfect for cleaning binocular lenses, small aperture spotting scopes and telescopes, eyepieces and other optical items.

The LensPen™ comes with a handy retractable dust removal brush and a special non-liquid cleaning element, designed to never dry out. Safe and very easy to use.

Model #93524 Binocular Tripod Adapter

GENERAL ACCESSORIES/ PUBLICATIONS

LENS SHADES

A Lens Shade/Dew Cap is a tube designed to wrap around the front end of your SCT telescope and reduce the amount of dew that builds up on the corrector plate. It also serves as a Len Shade by preventing stray light from falling on the corrector plate, which greatly improves contrast.

Celestron offers a complete line of rugged, but soft Foamex plastic lens shades that can be stored flat after usage. They are made from a thicker material that won't crack under temperature extremes. The quality level is a step above all others as all material is sewn (not glued) for a long life.

Model #94009 Lens Shade For C6 and C8 Tubes

Model #94013 C9.25 Lens Shade – Compatible with all 9.25" optical tubes

Model #94014 C11 Lens Shade – Compatible with all 11" optical tubes

Model #94015 C14 Lens Shade – Compatible with all 14" optical tubes



Computer Not Included.

TheSkyX FIRST LIGHT EDITION CD-ROM

Celestron and Software Bisque have teamed up to present a comprehensive CD-ROM called TheSkyX First Light Edition – for Celestron. Features include a computerized sky map with a 10,000 object database, 75 color images, horizontal projection, custom sky chart printing, and zoom capability. A fun, useful and educational product. PC format (Windows 95 and newer versions).

Model #93700 TheSkyX First Light Edition CD-ROM

CELESTRON SKY MAP

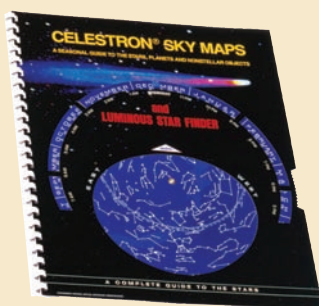
Celestron Sky Maps are the ideal teaching guide for learning the night sky. You wouldn't set off on a road trip without a road map, and you don't need to try to navigate the night sky without a map either. Even if you already know your way around the major constellations, this map can help you locate all kinds of fascinating objects.

The front cover has a specially designed luminous planisphere that rotates to simulate the seasonal progression of celestial objects through the sky. When the planisphere is pre-exposed to light, star positions glow brightly against a dark background, mimicking actual constellations.

More than a thousand stars and deep-sky objects are listed and charted. The illustrated reference section provides basic information and the visual characteristics of various types of stars, nebulae and galaxies. The map measures 13.25" x 11.25" and is printed on a heavyweight, moisture resistant card stock. The pages have a special comb binding so they can lay flat or be folded over.

Note: This product cannot be used in the Southern Hemisphere

Model #93722 Celestron Sky Map



Appendix A – EYEPiece FILTER INFO

In the following descriptions you will learn what you can expect from Celestron's eyepiece filters in different viewing situations.

YELLOW

#12 DEEP YELLOW 74% T ■ #15 DEEP YELLOW 67% T »» Moon – Enhance lunar features. **Jupiter** – Penetrate and darken atmospheric currents containing low-hue blue tones. Enhance orange and red features of the belts and zones. Useful for studies of the polar regions. **Mars** – Reduce light from the blue and green areas which darken the maria, oases and canal markings, while lightening the orange-hued desert regions. Also sharpen the boundaries of yellow dust clouds. **Neptune** – Improve detail in larger telescopes (11" and larger apertures). **Saturn** – Penetrate and darken atmospheric currents containing low-hue blue tones. Enhance orange and red features of the belts and zones. **Uranus** – Improve detail in larger telescopes (11" and larger apertures). **Venus** – Reveal low-contrast surface features. **Comets** – Enhance definition in comet tails.

ORANGE

#21 ORANGE 46% T »» Moon – Greatly enhances lunar features. **Jupiter** – Improves appearance and detail revealed in structure of Jovian belts. Enhances viewing of festoons and polar regions. **Mars** – Reduces light from the blue and green areas which darken the maria, oases and canal markings, while lightening the orange-hued desert regions. Also sharpens the boundaries of yellow dust clouds. **Mercury** – Reduces the brightness of blue sky during daylight observing, to reveal surface features. **Saturn** – Improves structure of the Saturnian bands and highlights blue polar regions. **Venus** – Use during daylight observing to reduce brightness of blue sky. **Comets** – Enhances definition of comet dust tails and heads in larger telescopes (11" and greater aperture). **Solar** – When using some Mylar Solar Filters, adding this orange filter will give a truer color rendition.

RED

#25 RED 14% T »» Moon – Improves lunar features. **Jupiter** – Useful for studying bluer clouds. **Mars** – Ideal for observation of the polar ice caps and features on the Martian surface. Sharpens the boundaries of yellow dust clouds. **Mercury** – Improves observation at twilight, when the planet is near the horizon. During daylight, it reduces the brightness of the blue sky to enhance surface features. **Saturn** – Useful for studying bluer clouds. **Venus** – Use during daylight observing to reduce brightness of blue sky. Occasionally deformations of the terminator are visible.

BLUE

#80A LIGHT BLUE 30% T »» Moon – Enhance lunar detail. **Jupiter** – Enhance the boundaries between the reddish belts and adjacent bright zones. Useful for viewing the Great Red Spot. **Mars** – Very useful during the violet clearing. Helpful in studying surface features and polar caps. **Mercury** – Improve observation of dusky surface markings at twilight, when the planet is near the horizon. **Saturn** – Enhance low-contrast features between the belts and zones. **Venus** – Useful for increased contrast of dark shadings in upper Venusian clouds. **Comets** – Bring out the best definition in comet gas tails.

GREEN

#56 LIGHT GREEN 53% T »» Moon – Enhances lunar features. **Jupiter** – Increases visibility of the Great Red Spot. Useful for observing the low-contrast hues of blue and red that exist in the Jovian atmosphere. **Mars** – Excellent for increased contrast of Martian polar caps, low clouds and yellowish dust storms. **Venus** – Useful for Venusian cloud pattern studies. Reduces brightness of blue sky during daylight observing.

#58 GREEN 24% T »» Same characteristics as the #56 Green filter, with the exception of the following: **Saturn** – Enhances white features in the Saturnian atmosphere. **Comets** – Useful for observing brighter comets.

SPECIALTY TELESCOPES



THE FIRSTSCOPE PAYS TRIBUTE TO GALILEO GALILEI AND MANY OF HISTORY'S MOST NOTABLE ASTRONOMERS



#21024-ACC

FIRSTSCOPE ACCESSORY KIT

The FirstScope Accessory Kit expands the capabilities of your FirstScope telescope to make it more enjoyable and easier to use, enhance your views of the night sky, and make it safer to transport wherever you go.

Accessory Kit Includes:

- 12.5 mm Eyepiece – 1.25" – Increases the power to 24x which makes it easier to find and observe some objects that require more magnification.
- 6 mm Eyepiece – 1.25" – This eyepiece increases the power to 50x which boosts the magnification up higher to see more detail of faint objects.
- Moon Filter – 1.25" – A moon filter reduces the brightness of the moon and improves contrast so that greater detail can be observed on the lunar surface. The filter has threads on it which screw into the bottom of the eyepieces.
- 5x24 Finderscope and bracket – This finderscope with bracket will make it easier to locate astronomical objects with the FirstScope telescope because of its much wider field of view and low magnification. Installation is simple with no tools necessary.
- CD-ROM – "TheSkyX" – Lets you explore and develop an understanding of basic astronomy. This full featured planetarium software is capable of printing star charts, displaying beautiful astronomical photos, helps you to identify planets and stars, learn the constellations, and much more. Operating Systems: Windows XP and Vista, as well as MAC 10.4.8 and later.
- Nylon Carrying Bag for FirstScope Telescope – Pack your FirstScope telescope and accessories in this tote bag for easy and safe transportation.



Model #21024-ACC FirstScope Accessory Kit

TELESCOPES



SPOTTING SCOPES



BINOCULARS



SKYSCOUT®



MICROSCOPES



ACCESSORIES



WWW.CELESTRON.COM



All items designated TM or ® are trademarks or registered trademarks of Celestron or the specific companies designated. Product designs and specifications are subject to change or modification without prior notification.

© 2011 Celestron



#93685-11